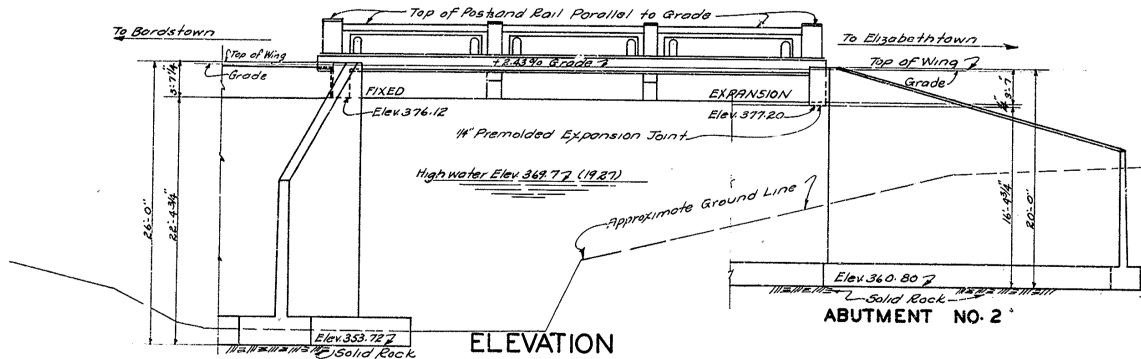


**REFERENCES:**

For details of 45'-0" R.C. Deck Girder, 45° skew left, see Standard Drawing No. G-113 and Revisions to Endwall on this sheet.  
 For details of R.C. Abutment No. 1, 45° skew left, see Standard Drawing No. A-81 (2 sheets) and Revisions on Sheet 2 of 2 of this Drawing.  
 For details of R.C. Abutment No. 2, 45° skew left, see Standard Drawing No. A-76 (2 sheets) and Revisions on Sheet 2 of 2 of this Drawing.  
 For details of Handrail see details shown on Sheet 2 of 2 of this Drawing.

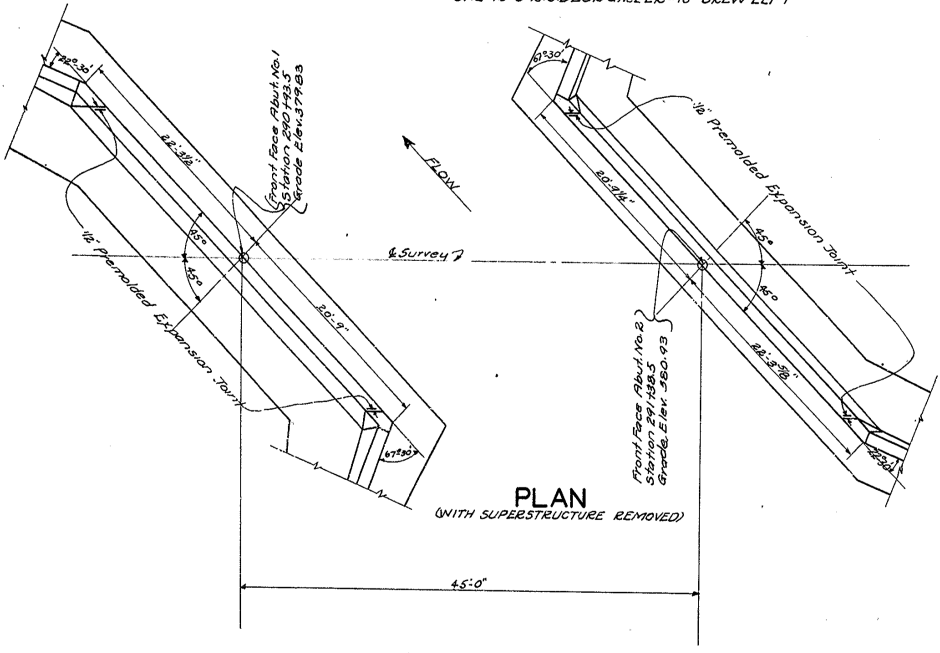
REV.	DATE	BY	CHK.	APP.	REASON
1					



**ELEVATION**

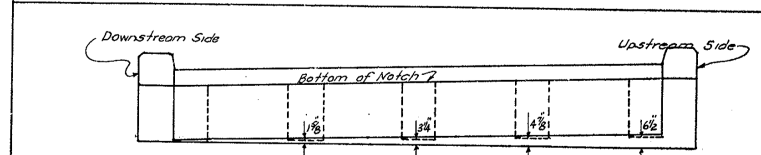
**ABUTMENT NO. 2**  
ONE 45'-0" R.C. DECK GIRDER-45° SKEW LEFT

**GENERAL NOTE**  
 Specifications: State Highway Department, Kentucky, 1932.  
 Concrete: Class "A" concrete to be used thruout except in Handrail and Posts. Class "D" concrete to be used in Handrail and Posts.  
 Reinforcement: Dimension from face of concrete to steel is the clear distance. Precast mortar or concrete blocks supporting reinforcement shall be spaced not farther apart than 50 diameters of the supported bar.  
 Wearing Surface: 3/4" Manalithic concrete wearing surface to be used and placed in accordance with the 1932 Specifications.  
 General Notes: General Notes on Standard Drawings called for shall be disregarded any in those portions which do not conform with the 1932 Specifications.

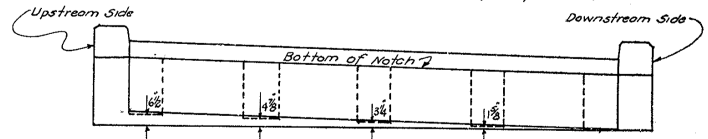


**PLAN**

(WITH SUPERSTRUCTURE REMOVED)



**END ELEVATION-ABUTMENT NO. 1**  
(Showing offsets to Beams) (Measured on Inside face of Endwall)



**END ELEVATION-ABUTMENT NO. 2**  
(Showing offsets to Beams) (Measured on Inside face of Endwall)

**ESTIMATE OF QUANTITIES**  
 Concrete, Class "A" 890 Cu.Yds.  
 Reinforcement 21,520 Lbs.  
 10 Expansion Plates (Class "B" Bronze) 340 Lbs.

**DETAILS OF REVISIONS TO ENDWALLS**

G-113  
 A-76 (2 sheets)  
 A-81 (2 sheets)

**TOTAL ESTIMATE OF QUANTITIES**  
 Concrete, Class "A" 422.8 Cu.Yds.  
 Concrete, Class "D" 5.0 Cu.Yds.  
 Reinforcement 71,580 Lbs.  
 10 Expansion Plates (Class "B" Bronze) 340 Lbs.  
 Structure Excavation-unclassified 430 Cu.Yds.

Bridge over Cedar Creek Sheet 1 of 2

**COMMONWEALTH OF KENTUCKY**  
 STATE HIGHWAY DEPARTMENT  
 FRANKFORT  
 COUNTY OF

**NELSON**

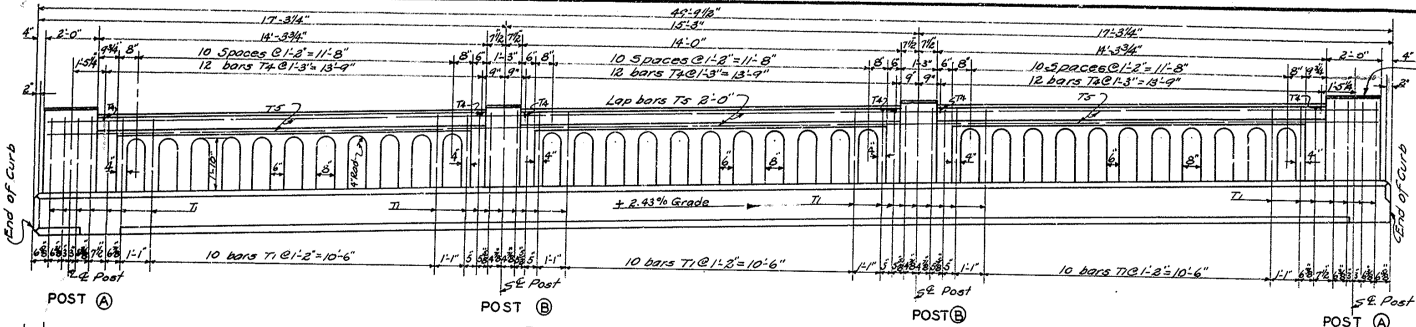
**BARDSTOWN-ELIZABETHTOWN**

ROAD PROJECT NO.  
 STATION 231+16.0 PROJECT NO.

MP 90-305-3 5575

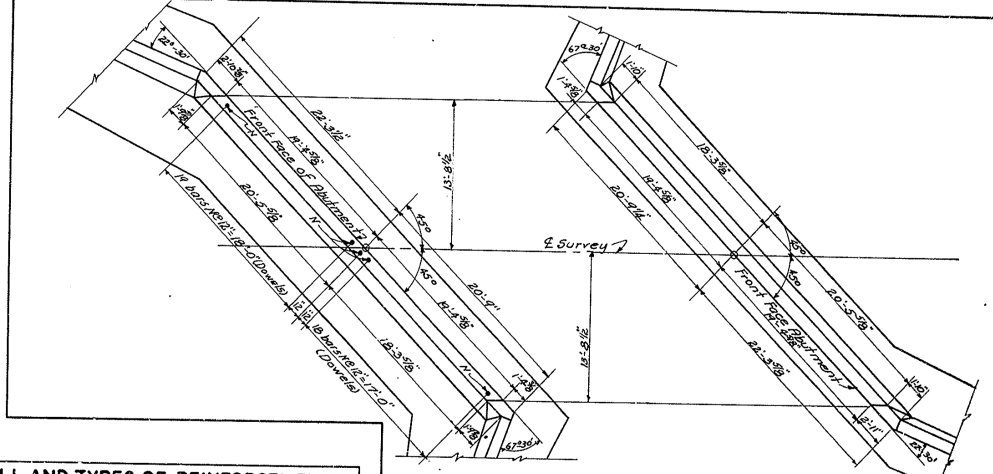
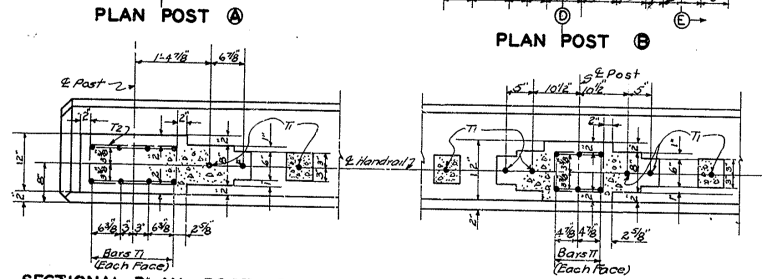
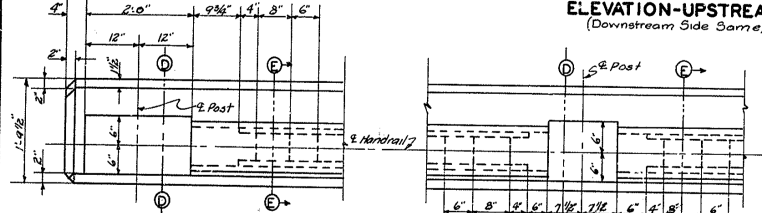
Revised Abut. No. 1, 2, 3, 4, 5, 6, 7, 8, 9, 10, 11, 12, 13, 14, 15, 16, 17, 18, 19, 20, 21, 22, 23, 24, 25, 26, 27, 28, 29, 30, 31, 32, 33, 34, 35, 36, 37, 38, 39, 40, 41, 42, 43, 44, 45, 46, 47, 48, 49, 50, 51, 52, 53, 54, 55, 56, 57, 58, 59, 60, 61, 62, 63, 64, 65, 66, 67, 68, 69, 70, 71, 72, 73, 74, 75, 76, 77, 78, 79, 80, 81, 82, 83, 84, 85, 86, 87, 88, 89, 90, 91, 92, 93, 94, 95, 96, 97, 98, 99, 100, 101, 102, 103, 104, 105, 106, 107, 108, 109, 110, 111, 112, 113, 114, 115, 116, 117, 118, 119, 120, 121, 122, 123, 124, 125, 126, 127, 128, 129, 130, 131, 132, 133, 134, 135, 136, 137, 138, 139, 140, 141, 142, 143, 144, 145, 146, 147, 148, 149, 150, 151, 152, 153, 154, 155, 156, 157, 158, 159, 160, 161, 162, 163, 164, 165, 166, 167, 168, 169, 170, 171, 172, 173, 174, 175, 176, 177, 178, 179, 180, 181, 182, 183, 184, 185, 186, 187, 188, 189, 190, 191, 192, 193, 194, 195, 196, 197, 198, 199, 200, 201, 202, 203, 204, 205, 206, 207, 208, 209, 210, 211, 212, 213, 214, 215, 216, 217, 218, 219, 220, 221, 222, 223, 224, 225, 226, 227, 228, 229, 230, 231, 232, 233, 234, 235, 236, 237, 238, 239, 240, 241, 242, 243, 244, 245, 246, 247, 248, 249, 250, 251, 252, 253, 254, 255, 256, 257, 258, 259, 260, 261, 262, 263, 264, 265, 266, 267, 268, 269, 270, 271, 272, 273, 274, 275, 276, 277, 278, 279, 280, 281, 282, 283, 284, 285, 286, 287, 288, 289, 290, 291, 292, 293, 294, 295, 296, 297, 298, 299, 300, 301, 302, 303, 304, 305, 306, 307, 308, 309, 310, 311, 312, 313, 314, 315, 316, 317, 318, 319, 320, 321, 322, 323, 324, 325, 326, 327, 328, 329, 330, 331, 332, 333, 334, 335, 336, 337, 338, 339, 340, 341, 342, 343, 344, 345, 346, 347, 348, 349, 350, 351, 352, 353, 354, 355, 356, 357, 358, 359, 360, 361, 362, 363, 364, 365, 366, 367, 368, 369, 370, 371, 372, 373, 374, 375, 376, 377, 378, 379, 380, 381, 382, 383, 384, 385, 386, 387, 388, 389, 390, 391, 392, 393, 394, 395, 396, 397, 398, 399, 400, 401, 402, 403, 404, 405, 406, 407, 408, 409, 410, 411, 412, 413, 414, 415, 416, 417, 418, 419, 420, 421, 422, 423, 424, 425, 426, 427, 428, 429, 430, 431, 432, 433, 434, 435, 436, 437, 438, 439, 440, 441, 442, 443, 444, 445, 446, 447, 448, 449, 450, 451, 452, 453, 454, 455, 456, 457, 458, 459, 460, 461, 462, 463, 464, 465, 466, 467, 468, 469, 470, 471, 472, 473, 474, 475, 476, 477, 478, 479, 480, 481, 482, 483, 484, 485, 486, 487, 488, 489, 490, 491, 492, 493, 494, 495, 496, 497, 498, 499, 500, 501, 502, 503, 504, 505, 506, 507, 508, 509, 510, 511, 512, 513, 514, 515, 516, 517, 518, 519, 520, 521, 522, 523, 524, 525, 526, 527, 528, 529, 530, 531, 532, 533, 534, 535, 536, 537, 538, 539, 540, 541, 542, 543, 544, 545, 546, 547, 548, 549, 550, 551, 552, 553, 554, 555, 556, 557, 558, 559, 560, 561, 562, 563, 564, 565, 566, 567, 568, 569, 570, 571, 572, 573, 574, 575, 576, 577, 578, 579, 580, 581, 582, 583, 584, 585, 586, 587, 588, 589, 590, 591, 592, 593, 594, 595, 596, 597, 598, 599, 600, 601, 602, 603, 604, 605, 606, 607, 608, 609, 610, 611, 612, 613, 614, 615, 616, 617, 618, 619, 620, 621, 622, 623, 624, 625, 626, 627, 628, 629, 630, 631, 632, 633, 634, 635, 636, 637, 638, 639, 640, 641, 642, 643, 644, 645, 646, 647, 648, 649, 650, 651, 652, 653, 654, 655, 656, 657, 658, 659, 660, 661, 662, 663, 664, 665, 666, 667, 668, 669, 670, 671, 672, 673, 674, 675, 676, 677, 678, 679, 680, 681, 682, 683, 684, 685, 686, 687, 688, 689, 690, 691, 692, 693, 694, 695, 696, 697, 698, 699, 700, 701, 702, 703, 704, 705, 706, 707, 708, 709, 710, 711, 712, 713, 714, 715, 716, 717, 718, 719, 720, 721, 722, 723, 724, 725, 726, 727, 728, 729, 730, 731, 732, 733, 734, 735, 736, 737, 738, 739, 740, 741, 742, 743, 744, 745, 746, 747, 748, 749, 750, 751, 752, 753, 754, 755, 756, 757, 758, 759, 760, 761, 762, 763, 764, 765, 766, 767, 768, 769, 770, 771, 772, 773, 774, 775, 776, 777, 778, 779, 780, 781, 782, 783, 784, 785, 786, 787, 788, 789, 790, 791, 792, 793, 794, 795, 796, 797, 798, 799, 800, 801, 802, 803, 804, 805, 806, 807, 808, 809, 810, 811, 812, 813, 814, 815, 816, 817, 818, 819, 820, 821, 822, 823, 824, 825, 826, 827, 828, 829, 830, 831, 832, 833, 834, 835, 836, 837, 838, 839, 840, 841, 842, 843, 844, 845, 846, 847, 848, 849, 850, 851, 852, 853, 854, 855, 856, 857, 858, 859, 860, 861, 862, 863, 864, 865, 866, 867, 868, 869, 870, 871, 872, 873, 874, 875, 876, 877, 878, 879, 880, 881, 882, 883, 884, 885, 886, 887, 888, 889, 890, 891, 892, 893, 894, 895, 896, 897, 898, 899, 900, 901, 902, 903, 904, 905, 906, 907, 908, 909, 910, 911, 912, 913, 914, 915, 916, 917, 918, 919, 920, 921, 922, 923, 924, 925, 926, 927, 928, 929, 930, 931, 932, 933, 934, 935, 936, 937, 938, 939, 940, 941, 942, 943, 944, 945, 946, 947, 948, 949, 950, 951, 952, 953, 954, 955, 956, 957, 958, 959, 960, 961, 962, 963, 964, 965, 966, 967, 968, 969, 970, 971, 972, 973, 974, 975, 976, 977, 978, 979, 980, 981, 982, 983, 984, 985, 986, 987, 988, 989, 990, 991, 992, 993, 994, 995, 996, 997, 998, 999, 1000.

**BRIDGE**



NOTE:  
Top of all Posts and Rail to be parallel to Grade

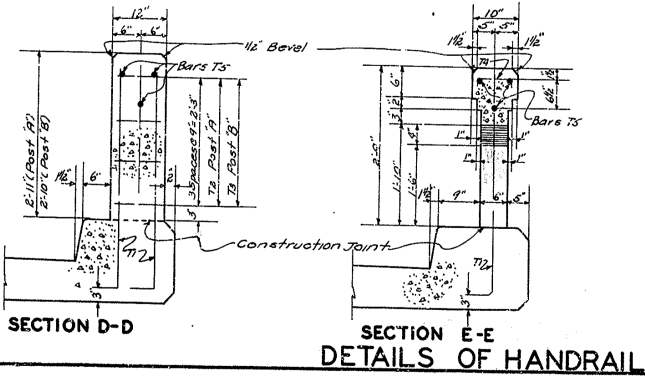
ELEVATION-UPSTREAM SIDE  
(Downstream Side Same)



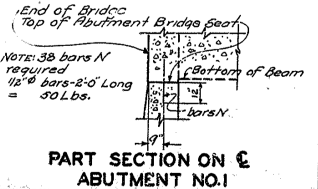
BILL AND TYPES OF REINFORCEMENT									
Mark	Type	No	Size	Length	Location	FT	IN	FT	IN
T1	(1)	140	1/2"	4'	Curb into Posts & Spindles	-	-	-	-
T2	(2)	16	3/8"	4'	Post 'A'	1	8	-	-
T3	"	16	"	3'	Post 'B'	0	11	-	-
T4	(3)	72	1/2"	0'	Rails	-	-	-	-
T5	STR	18	"	25'	"	-	-	-	-

ABUTMENT NO.1	ESTIMATE OF QUANTITIES FOR ABUTMENT NO.1	ABUTMENT NO.2	ESTIMATE OF QUANTITIES FOR ABUTMENT NO.2
	Concrete, Class 'A'		218.1 Cu. Yds.
	Reinforcement		34,650 Lbs.
	Concrete, Class 'A'		115.7 Cu. Yds.
	Reinforcement		16,550 Lbs.

DETAILS OF REVISIONS TO ABUTMENT BRIDGE SEATS  
Sheet 2 of 2



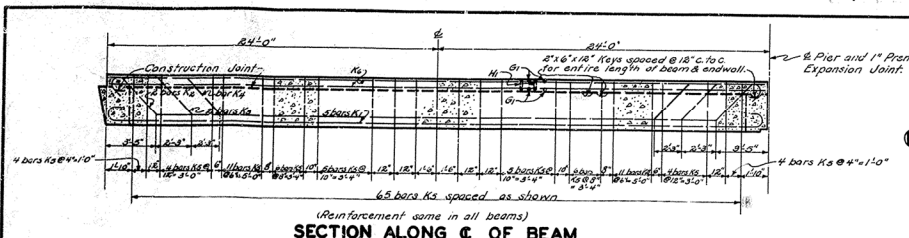
ESTIMATE OF QUANTITIES		
Concrete, Class 'A'	5.0 Cu. Yds.	
Reinforcement	860 Lbs.	



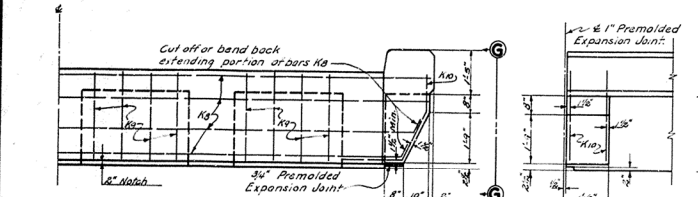
COMMONWEALTH OF KENTUCKY  
STATE HIGHWAY DEPARTMENT  
FRANKFORT COUNTY OF  
**NELSON**  
BARDSTOWN-ELIZABETHTOWN  
STATION 291+16.0 ROAD PROJECT NO.  
MP 90-305-5 5575

BRIDGE

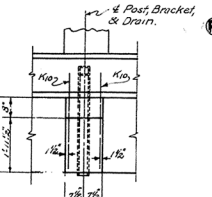
Vertical Curve, 200' Length, 4'-27'-3"  
DESIGNED BY: R. H. H. H.  
CHECKED BY: R. H. H. H.



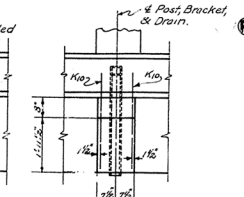
SECTION ALONG C OF BEAM



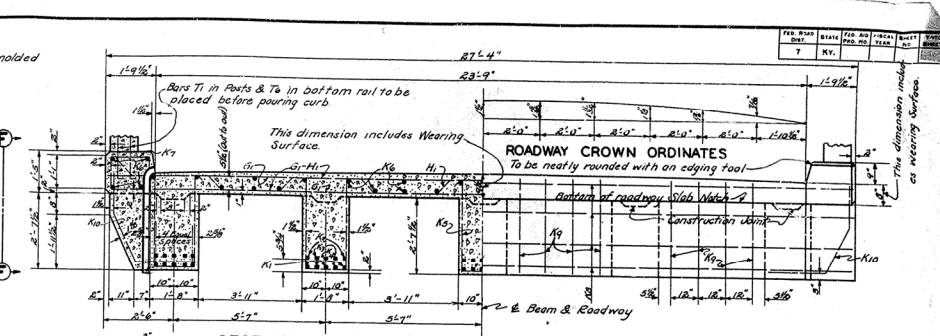
ELEVATION C-C



ELEVATION G-G

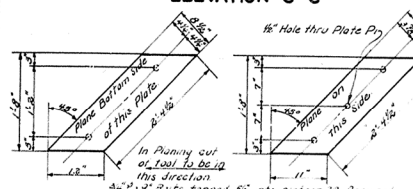


ELEVATION F-F

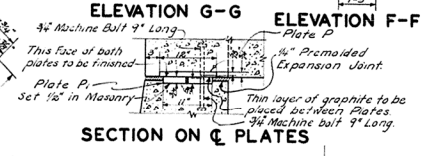


SECTION A-A

ELEVATION B-B



DETAILS OF EXPANSION PLATES



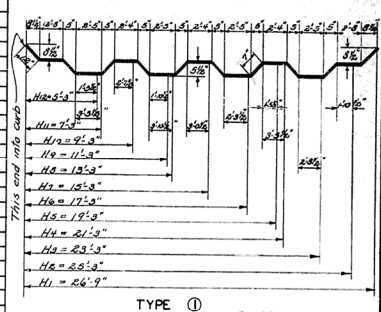
SECTION ON C PLATES



CAST IRON DRAIN DETAILS

BILL AND TYPES OF BENT REINFORCEMENT

Mark	Type	No.	Size	Length	Location
H1	23	5	1/2	11	Slab
H2	2	2	5/8	2	"
H3	4	4	24	1	"
H4	4	4	22	0	"
H5	4	4	20	0	"
H6	4	4	17	11	"
H7	4	4	15	10	"
H8	4	4	13	9	"
H9	4	4	11	9	"
H10	4	4	9	8	"
H11	4	4	7	"	"
H12	4	4	5	7	"
K1	2	2	18	50	Beams
K2	10	10	5	3	"
K3	10	10	5	2	"
K4	10	10	5	1	"
K5	3	3	49	4	"
K6	3	3	47	9	"
K7	7	7	1/2	5	Curbs
K8	9	9	3/2	6	End Walls
K9	24	24	"	1	Brackets

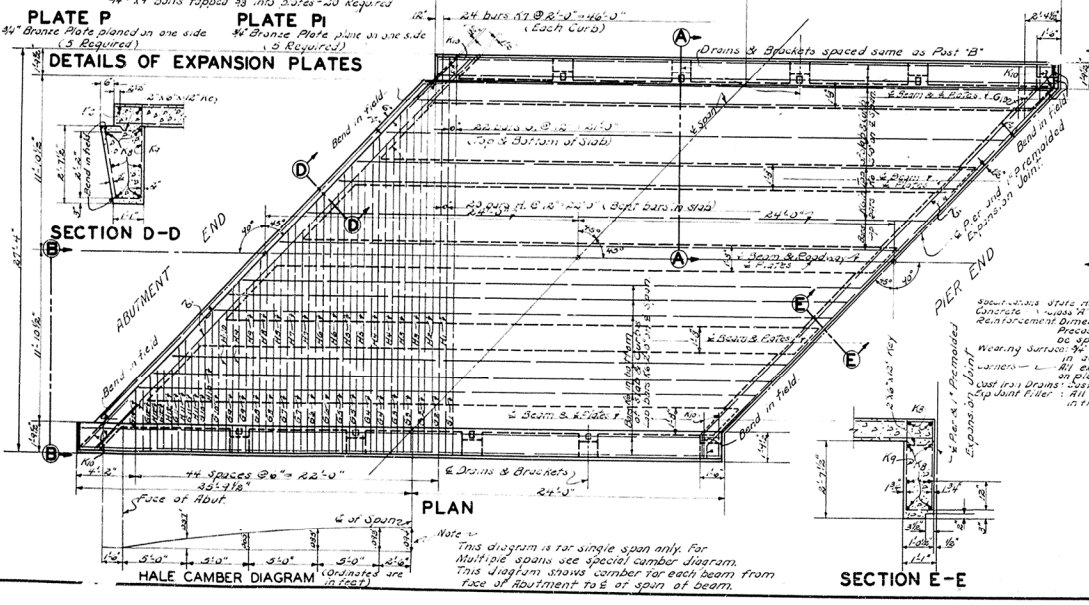


BILL OF STRAIGHT REINFORCEMENT

Mark	No.	Size	Length	Location
S1	4	3/8	27	Top and Bottom of Slab
S2	4	3/8	10	"
S3	4	3/8	10	"
S4	4	3/8	10	"
S5	4	3/8	10	"
S6	4	3/8	10	"
S7	4	3/8	10	"
S8	4	3/8	10	"
S9	4	3/8	10	"
S10	4	3/8	10	"
S11	4	3/8	10	"
S12	4	3/8	10	"
S13	4	3/8	10	"
S14	4	3/8	10	"
S15	4	3/8	10	"
S16	4	3/8	10	"
S17	4	3/8	10	"
S18	4	3/8	10	"
S19	4	3/8	10	"
S20	4	3/8	10	"
S21	4	3/8	10	"
S22	4	3/8	10	"
S23	4	3/8	10	"
S24	4	3/8	10	"
S25	4	3/8	10	"
S26	4	3/8	10	"
S27	4	3/8	10	"
S28	4	3/8	10	"
S29	4	3/8	10	"
S30	4	3/8	10	"
S31	4	3/8	10	"
S32	4	3/8	10	"
S33	4	3/8	10	"
S34	4	3/8	10	"
S35	4	3/8	10	"
S36	4	3/8	10	"
S37	4	3/8	10	"
S38	4	3/8	10	"
S39	4	3/8	10	"
S40	4	3/8	10	"
S41	4	3/8	10	"
S42	4	3/8	10	"
S43	4	3/8	10	"
S44	4	3/8	10	"
S45	4	3/8	10	"
S46	4	3/8	10	"
S47	4	3/8	10	"
S48	4	3/8	10	"
S49	4	3/8	10	"
S50	4	3/8	10	"
S51	4	3/8	10	"
S52	4	3/8	10	"
S53	4	3/8	10	"
S54	4	3/8	10	"
S55	4	3/8	10	"
S56	4	3/8	10	"
S57	4	3/8	10	"
S58	4	3/8	10	"
S59	4	3/8	10	"
S60	4	3/8	10	"

GENERAL NOTE

Reinforcing steel should conform to specifications of the American Institute of Steel Construction, Inc. All concrete to be used in beams, girders, curbs, and wearing surface should be of the quality specified in the contract documents. The concrete should be placed and cured in accordance with the specifications. All exposed corners should be chamfered 1/4 inch unless otherwise shown. Cast iron drains and brackets should be included in the price bid for class 'A' concrete. Expansion joints should be included in the price bid for class 'B' concrete.



HALE CAMBER DIAGRAM

Note: This diagram is for single span only. For multiple spans see special camber diagram. This diagram shows camber for each beam from face of abutment to 5 ft. of span of beam.

SECTION E-E

ESTIMATE OF QUANTITIES

SPAN	CONCRETE	REINFORCEMENT
SINGLE	88.2	21520
END	87.0	21520
INTERMEDIATE	85.9	21520
10 Expansion Plates (Class 'B' bronze)		540 lbs.

COMMONWEALTH OF KENTUCKY  
STATE HIGHWAY DEPARTMENT

STANDARD CONCRETE BRIDGE

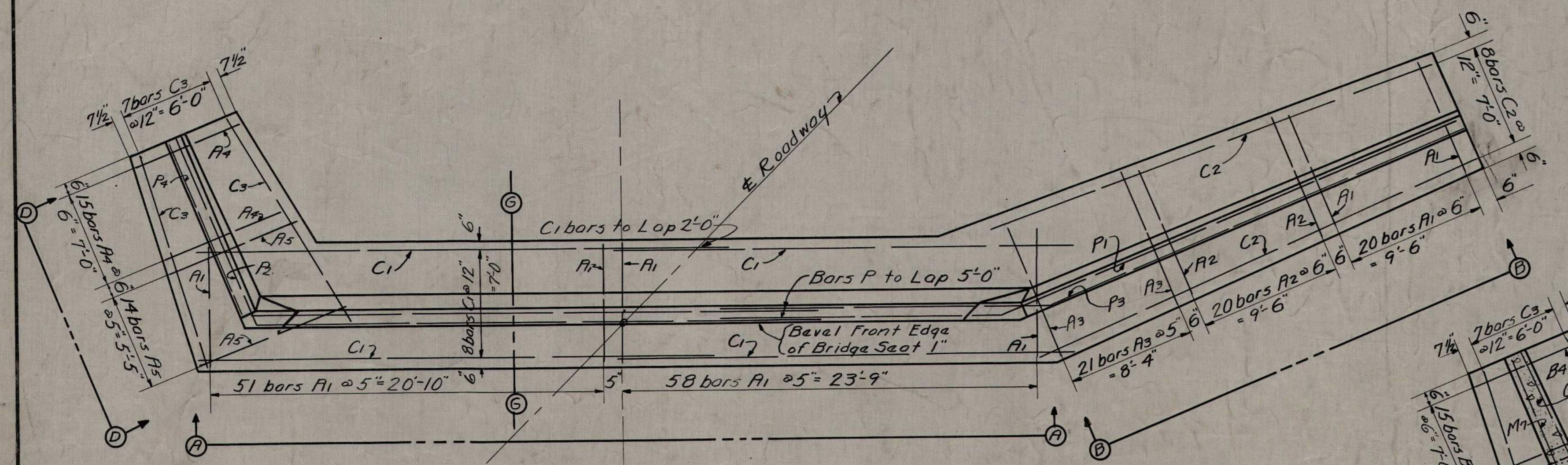
DECK GIRDER 45° SKEW  
4.5 FT. SPAN 24 FT. ROADWAY

DRAWING NO. G-113

Revised Class. J. E. Schulte  
DATE: 11-17-32  
BY: J. E. Schulte  
CHECKED BY: J. B. N.

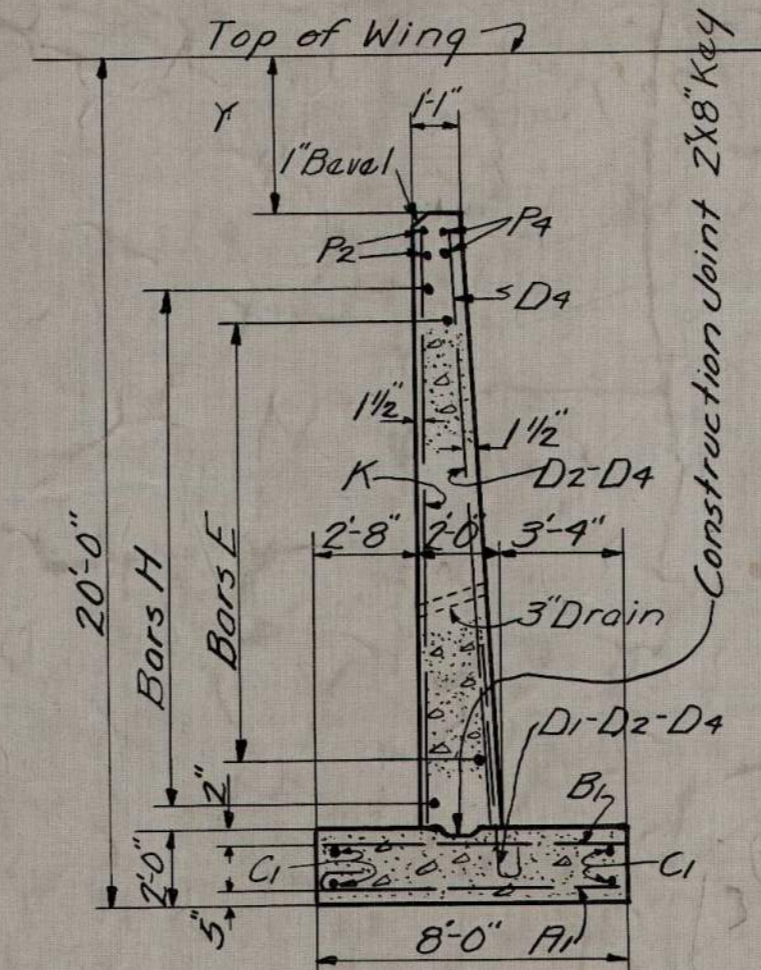




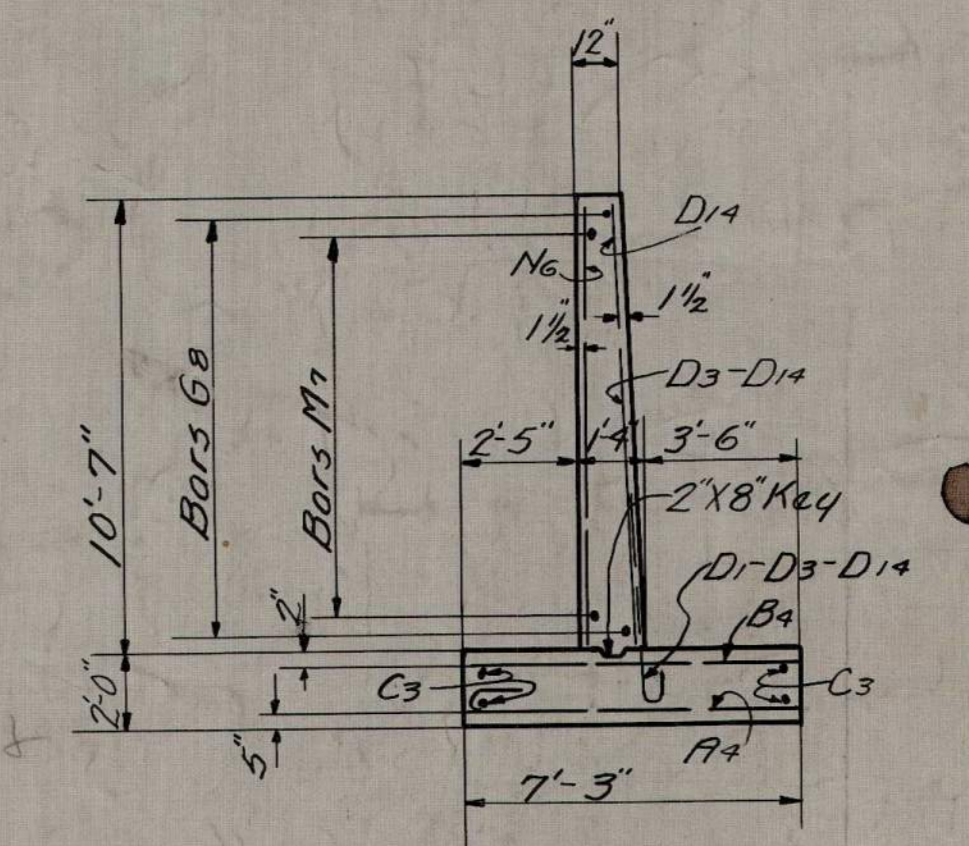


PLAN

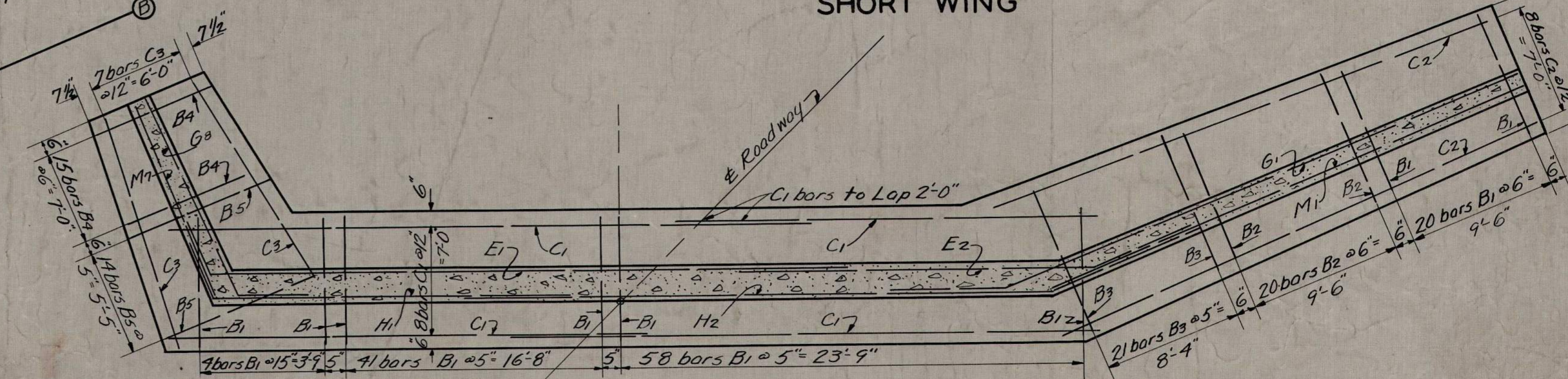
(Showing bars in bottom of Footing and bars "P" in Top of Walls)  
Intersection of  $\Phi$  of Roadway with front face of Abutment



SECTION G-G

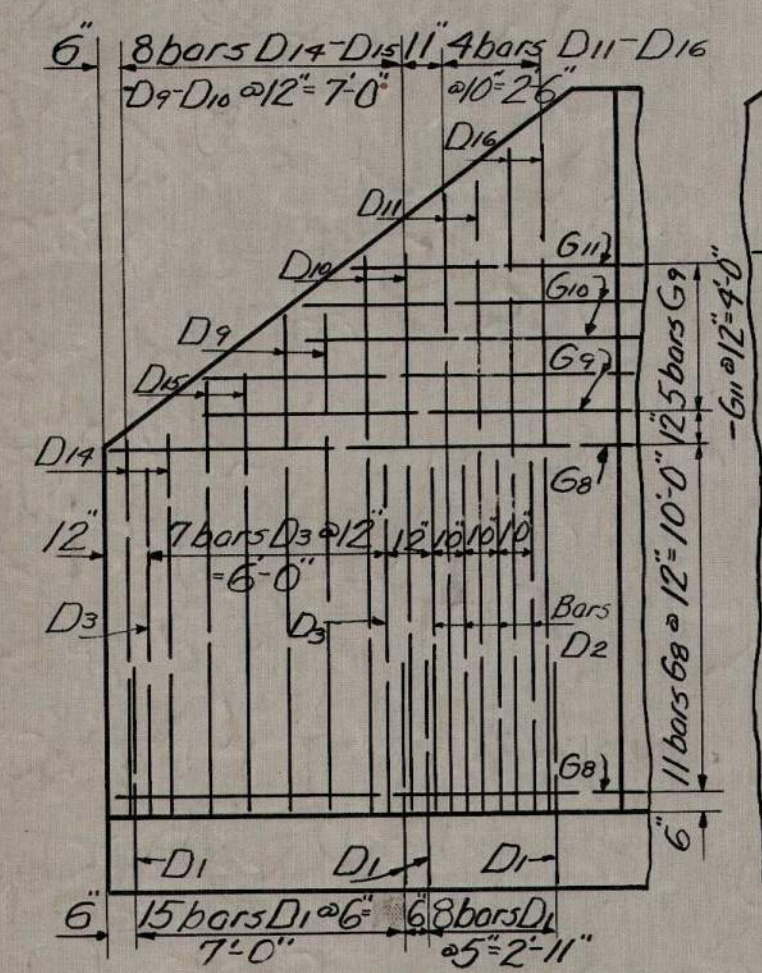


END ELEVATION SHORT WING

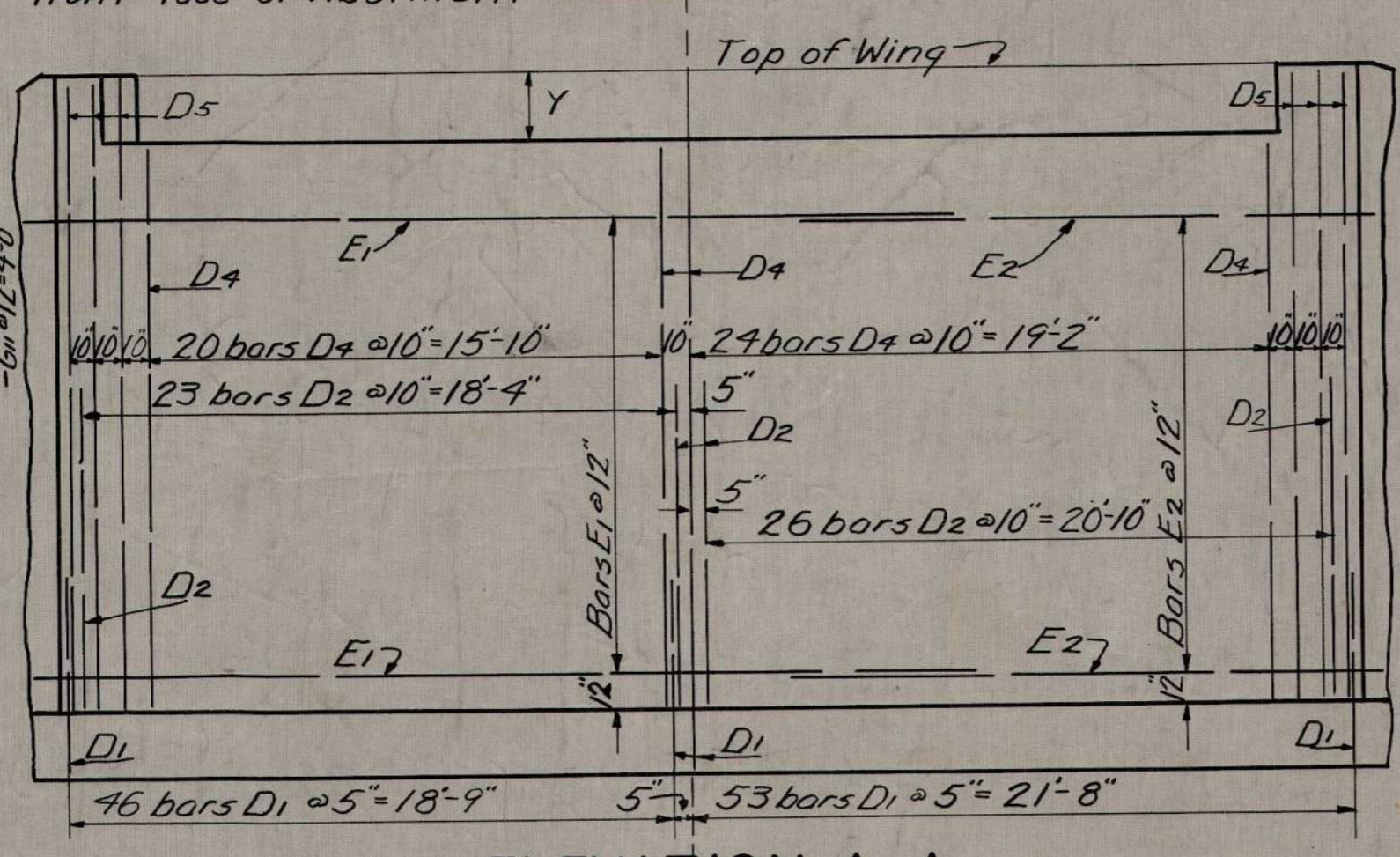


SECTION E-E

Showing bars in top of Footing and bars E, G, and H in Walls.

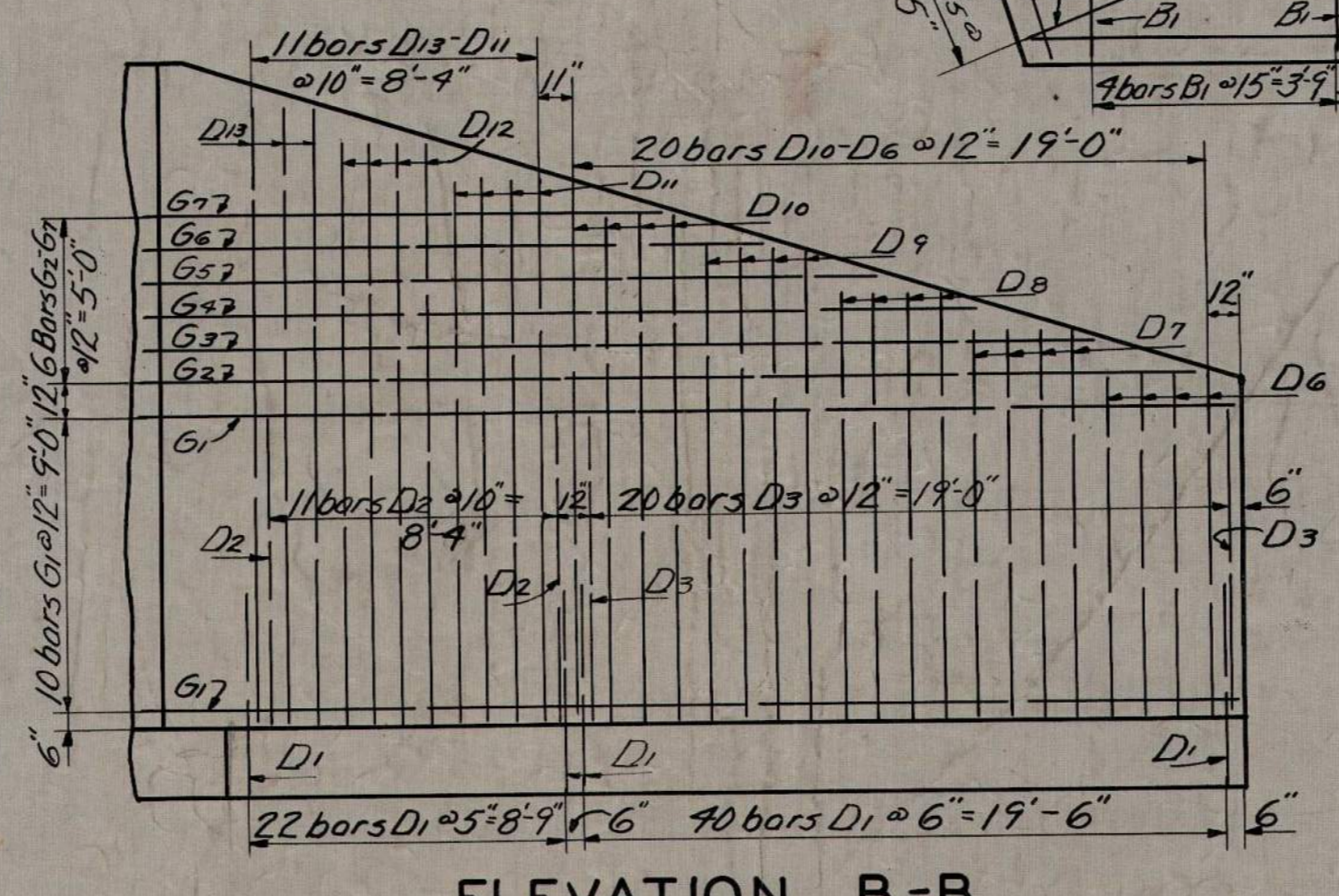


ELEVATION D-D

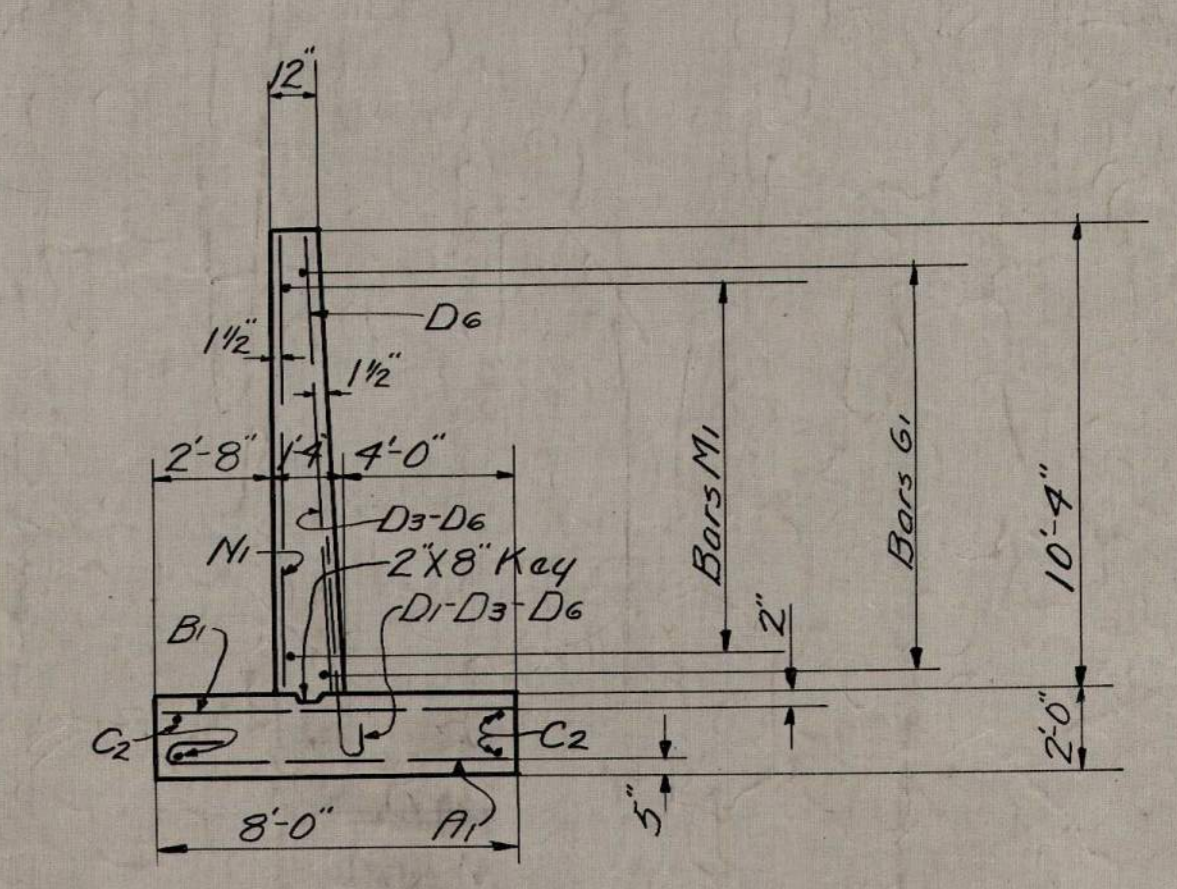


ELEVATION A-A

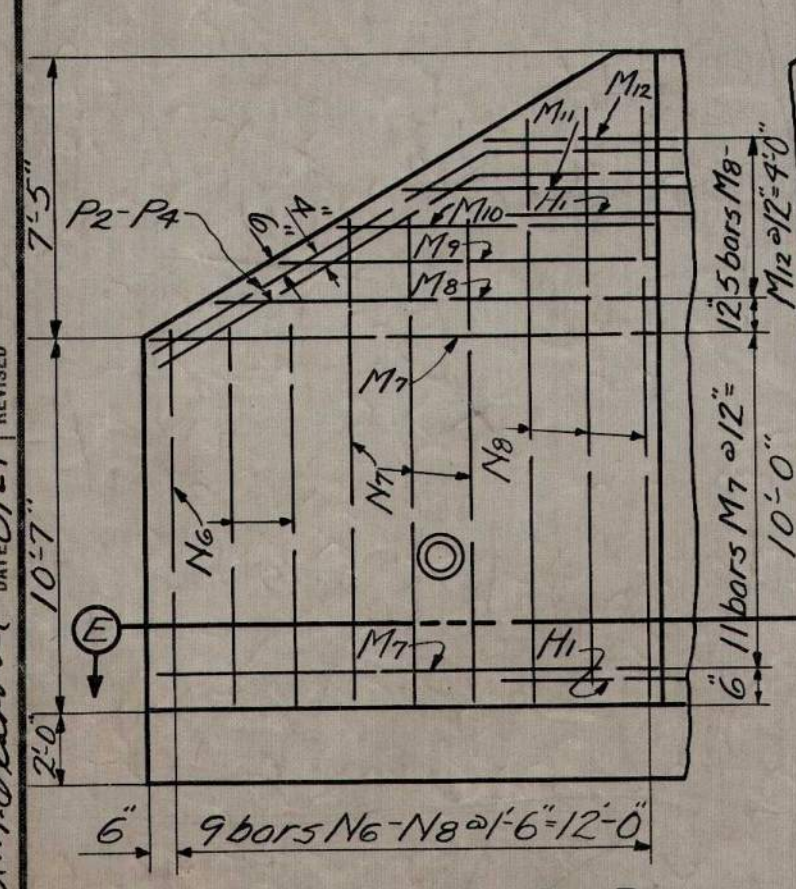
FRONT ELEVATIONS SHOWING STEEL IN BACK OF ABUTMENT WALLS



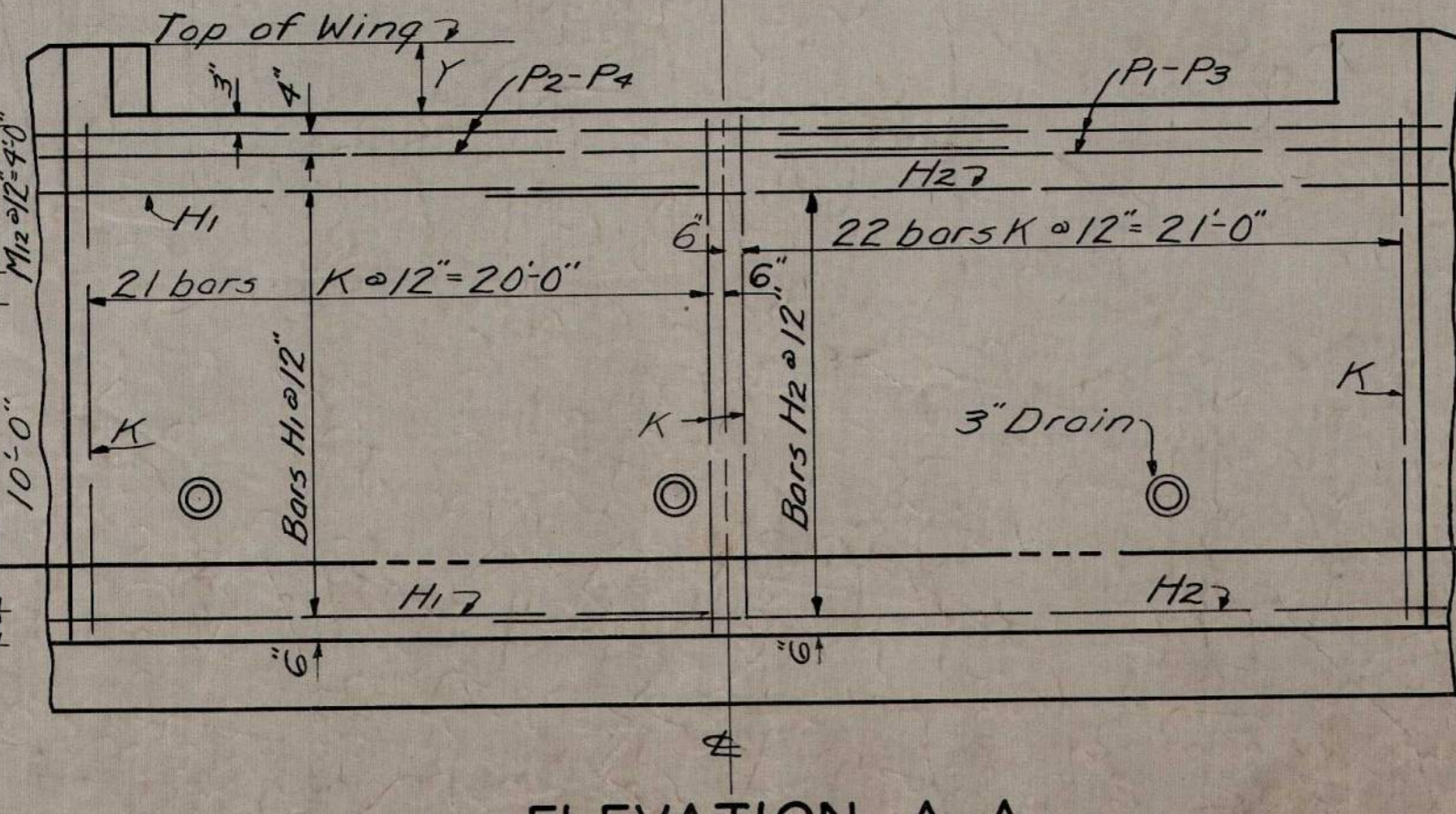
ELEVATION B-B



END ELEVATION LONG WING

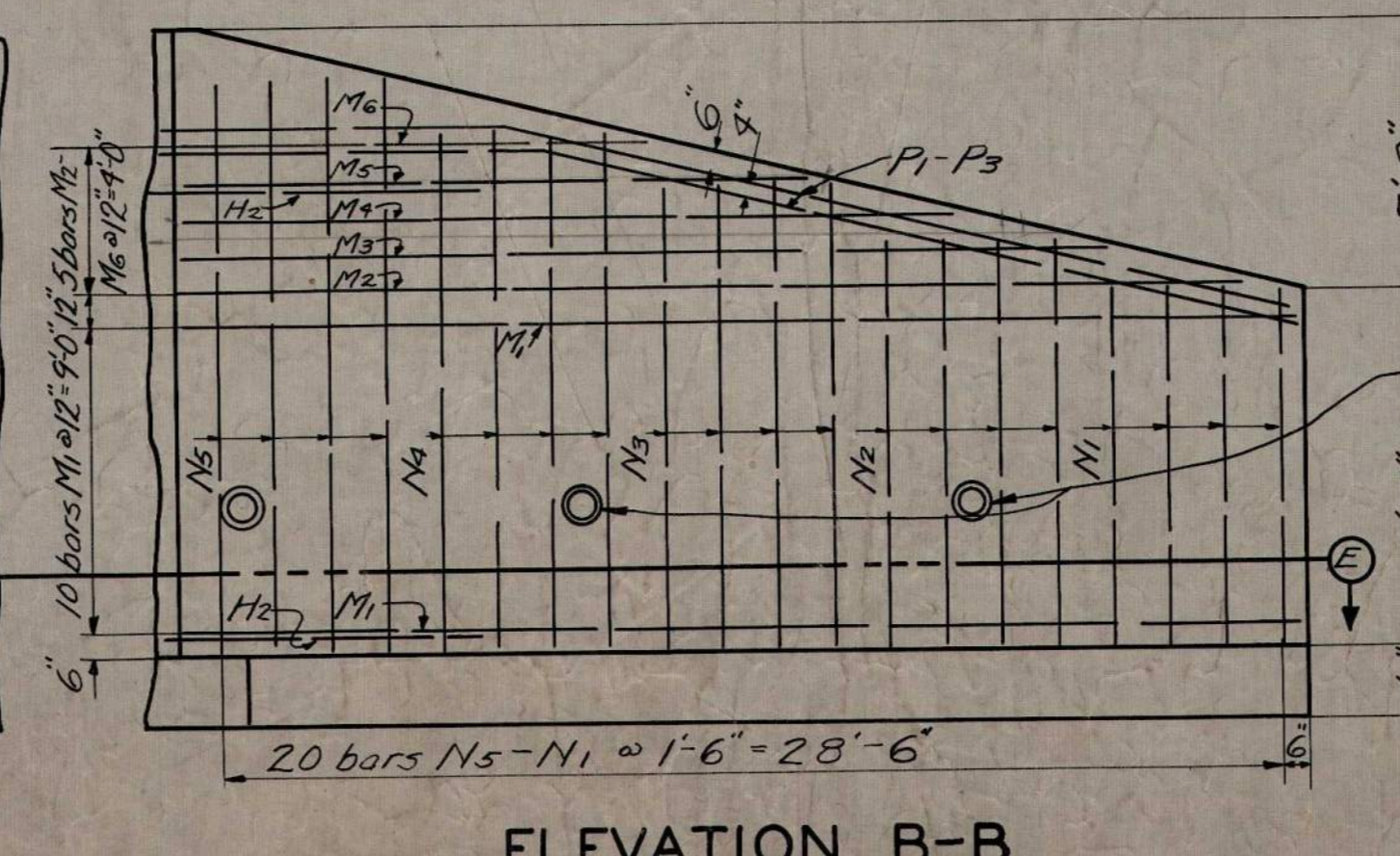


ELEVATION D-D



ELEVATION A-A

FRONT ELEVATIONS SHOWING STEEL IN FRONT OF ABUTMENT WALLS



ELEVATION B-B

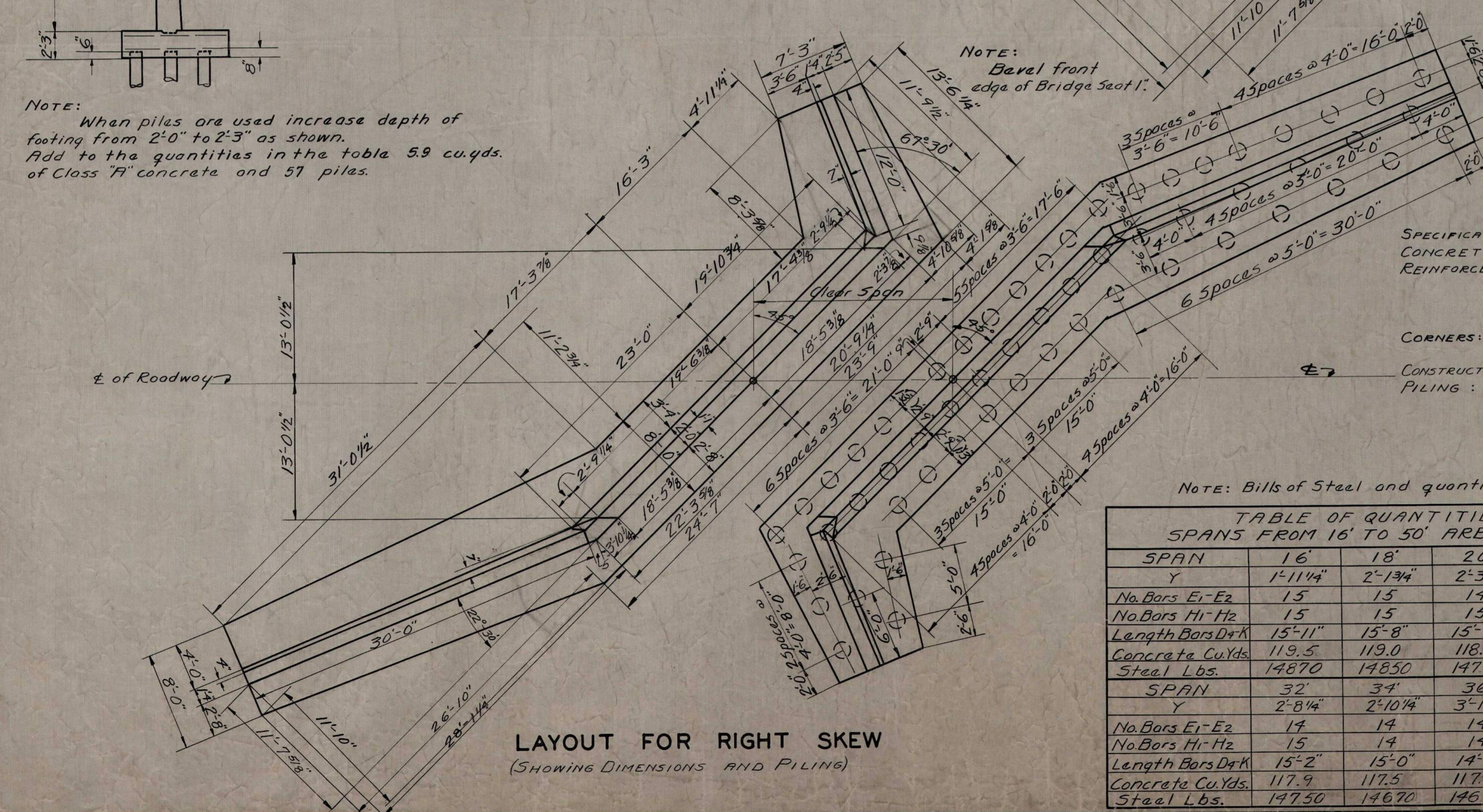
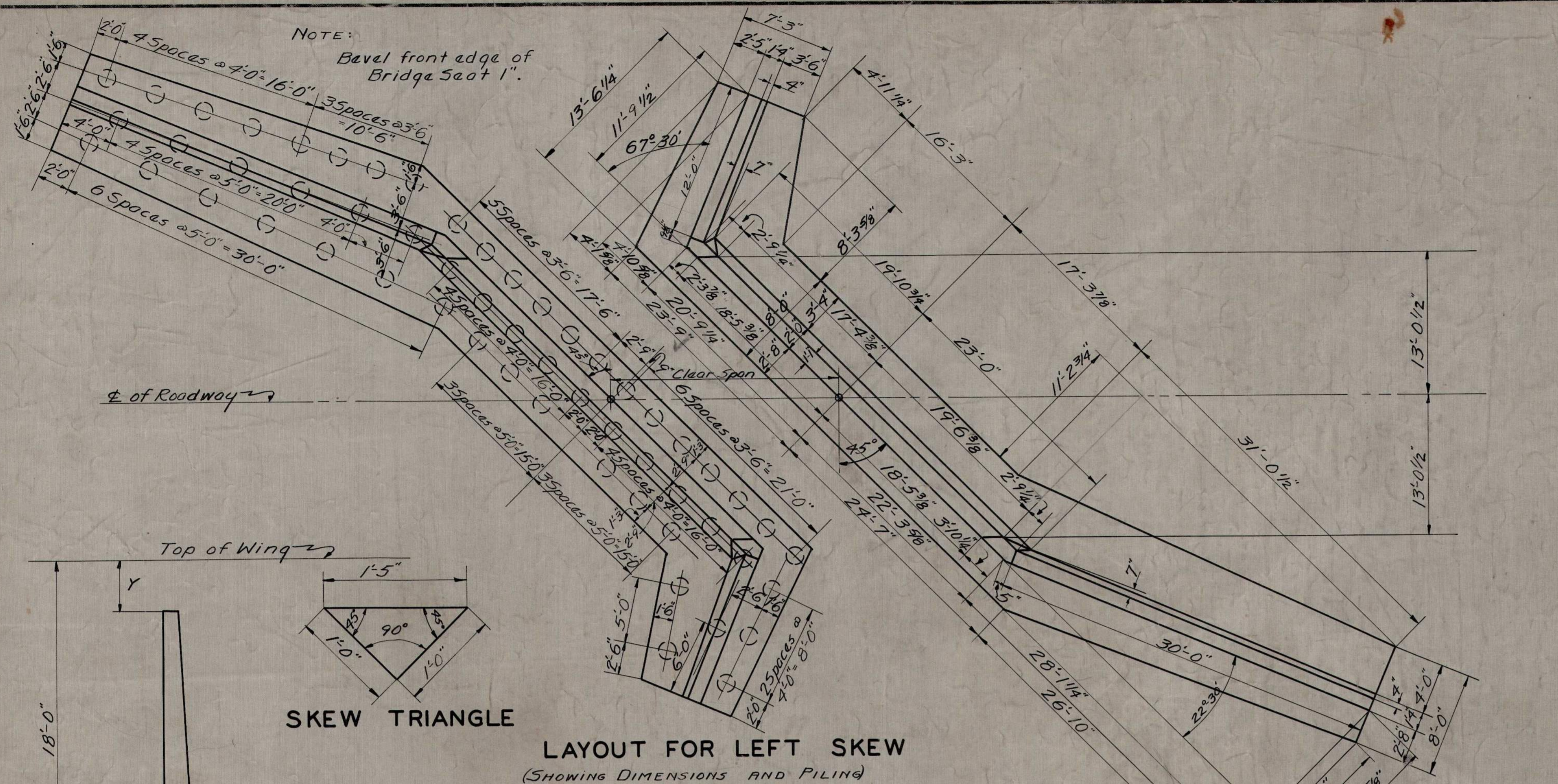
Place 3" Clay drain Tile Weepers where indicated at such an elevation as will afford best drainage of backfilling and pack loose rock behind them to prevent wash of earth.

**COMMONWEALTH OF KENTUCKY**  
STATE HIGHWAY DEPARTMENT  
**STANDARD 20 FT. ABUTMENT**  
**REINFORCED CONCRETE 45° SKEW**  
**FOR DECK GIRDERS 24 FT. ROADWAY**

SUBMITTED BY	BRIDGE ENGR.	DRAWING NO.	INDEX
APPROVED BY	STATE HIGHWAY ENGR.	A-76	S-4

DESIGNED BY R.L.G. 7-30-29  
 CHECKED BY W.M. DUNN 8/6/29  
 REVISIONS: 1. DATE 8/6/29 BY W.M. DUNN  
 2. DATE 8/12/29 BY W.M. DUNN





### BILL OF STRAIGHT REINFORCEMENT

MARK	No.	SIZE	LENGTH		LOCATION	
			FT.	IN.		
B1	123	1/2"Ø	7	9	Top of Footing	
B2	20	"	8	5		
B3	21	"	9	2		
B4	15	"	7	2		
B5	14	"	8	10		
C1	32	"	25	3	Top and Bottom of Footing	
C2	16	"	29	6		
C3	14	"	14	0		
D2	64	5/8"Ø	9	0	Back of End & Wing Walls	
D3	27	1/2"Ø	9	0	Back of Wing Walls	
D4	44	5/8"Ø			Back of End Wall	
D5	6	"	17	10	Back of Long Wing Wall	
D6	4	1/2"Ø	10	4		
D7	4	"	11	4	Back of Long & Short Wing Walls	
D8	4	"	12	4		
D9	6	"	13	3		
D10	6	"	14	5	Back of Long Wing Wall	
D11	6	5/8"Ø	15	6		
D12	4	"	16	4	Back of Short Wing Wall	
D13	3	"	17	2		
D14	2	1/2"Ø	10	9		
D15	2	"	12	0	Front of End & Wing Walls	
D16	2	5/8"Ø	16	8		
K	43	"			Front of Long Wing Wall	
M1	10	3/4"Ø	30	3		
M2	1	"	29	6		
M3	1	"	25	6		
M4	1	"	21	7		
M5	1	"	17	8		
M6	1	"	13	9		
M7	11	"	12	7		Front of Short Wing Wall
M8	1	"	11	1		
M9	1	"	9	6		
M10	1	"	7	11		Front of Long Wing Wall
M11	1	"	6	4		
M12	1	"	4	9		
N1	4	5/8"Ø	10	3		
N2	4	"	11	10		
N3	4	"	13	4		
N4	4	"	14	10		
N5	4	"	16	4		
N6	3	"	10	8	Front of Short Wing Wall	
N7	3	"	13	9		
N8	3	"	16	6		

NOTE: See table for length of Bars D4 & K

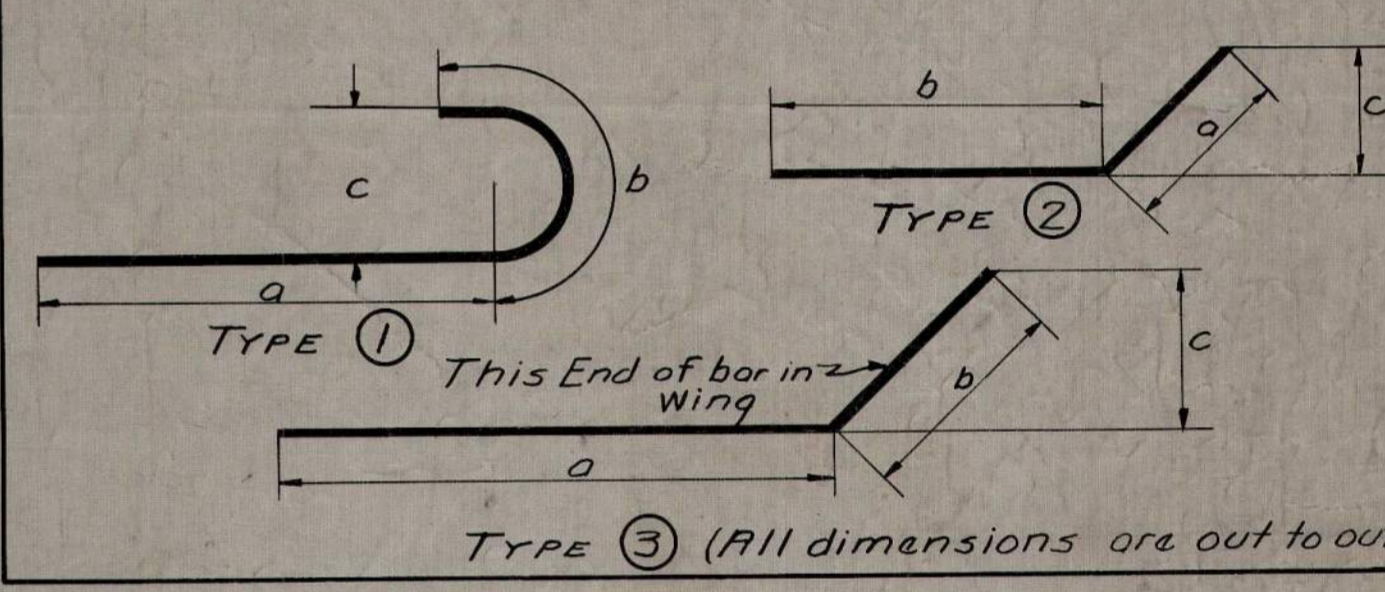
### GENERAL NOTE

SPECIFICATIONS: State Highway Department, Kentucky, 1926.  
 CONCRETE: Class 'A' concrete to be used thruout.  
 REINFORCEMENT: Dimensions from face of concrete to steel are clear distances. Precast mortar or concrete blocks supporting reinforcement shall be spaced not farther apart than 50 diameters of the supported bar. All exposed corners to be chamfered 7/8" unless otherwise shown.  
 CORNERS: For permissible locations, see Standard Sheet M-44.  
 PILING: Piling shall be driven to sustain a minimum load of 18 tons per pile.

### BILL AND TYPES OF BENT REINFORCEMENT

MARK	TYPE	No.	SIZE	LENGTH		LOCATION	a b c					
				FT.	IN.		FT.	IN.	FT.	IN.		
A1	①	129	1/2"Ø	8	4	Bottom of Footing	7	6	0	10	0	5
A2	"	20	"	9	0		8	2	0	10	0	5
A3	"	21	"	9	9		8	11	0	10	0	5
A4	"	15	"	7	9		6	11	0	10	0	5
A5	"	14	"	9	5		8	7	0	10	0	5
D1	②	184	7/8"Ø	7	2	Back of End Wall & Wing Wall	5	10	1	4	0	8
E1	②		5/8"Ø	34	2		Back of End Wall	2	0	32	3	1
E2	②		"	19	2	Back of Long Wing		2	0	17	3	0
G1	"	10	3/4"Ø	34	3		2	0	32	3	0	9
G2	"	1	"	33	7		2	0	31	7	0	9
G3	"	1	"	29	8		2	0	27	8	0	9
G4	"	1	"	25	9		2	0	23	9	0	9
G5	"	1	"	21	10		2	0	19	10	0	9
G6	"	1	"	17	11		2	0	15	11	0	9
G7	"	1	"	14	0		2	0	12	0	0	9
G8	"	11	"	14	10		2	0	12	10	1	10
G9	"	2	"	11	9		2	0	9	9	1	10
G10	"	2	"	8	6	2	0	6	6	1	10	
G11	"	1	"	6	10	2	0	4	10	1	10	
H1	③		5/8"Ø	21	3	Front of End Wall	4	0	17	3	3	9
H2	③		"	34	3		6	0	28	3	3	9
P1	③	2	1"Ø	44	3	Top of End Wall and Wing Wall	13	3	31	0	11	11
P2	"	2	"	44	3		32	3	12	0	11	1
P3	"	2	"	44	3		16	3	28	0	10	9
P4	"	2	"	44	3		33	9	10	6	9	9

NOTE: See table for Number of Bars E1-E2-H1-H2



### TABLE OF QUANTITIES AND NOTES WHEN SPANS FROM 16' TO 50' ARE USED ON THE ABUTMENT.

SPAN	16'	18'	20'	22'	24'	26'	28'	30'
Y	1'-11 1/4"	2'-1 3/4"	2'-3 1/4"	2'-3 3/4"	2'-4 3/4"	2'-4 3/4"	2'-5 3/4"	2'-7 3/4"
No. Bars E1-E2	15	15	14	14	14	14	14	14
No. Bars H1-H2	15	15	15	15	15	15	15	15
Length Bars D+K	15'-11"	15'-8"	15'-7"	15'-6"	15'-5"	15'-5"	15'-4"	15'-2"
Concrete Cu.Yds.	119.5	119.0	118.8	118.7	118.5	118.5	118.3	118.0
Steel Lbs.	14870	14850	14780	14780	14770	14770	14760	14750
SPAN	32'	34'	36'	38'	40'	45'	50'	
Y	2'-8 1/4"	2'-10 1/4"	3'-1 1/4"	3'-4 1/4"	3'-6 3/4"	3'-7 1/4"	4'-5 1/4"	
No. Bars E1-E2	14	14	14	13	13	13	12	
No. Bars H1-H2	15	14	14	14	14	14	13	
Length Bars D+K	15'-2"	15'-0"	14'-9"	14'-6"	14'-3"	14'-3"	13'-5"	
Concrete Cu.Yds.	117.9	117.5	117.0	116.5	116.0	116.0	114.2	
Steel Lbs.	14750	14670	14650	14570	14550	14550	14360	

Sheet 1 of 2

**COMMONWEALTH OF KENTUCKY**  
 STATE HIGHWAY DEPARTMENT

**STANDARD 20 FT. ABUTMENT**  
 REINFORCED CONCRETE 45° SKEW  
 FOR DECK GIRDERS 24 FT. ROADWAY

SUBMITTED BY: [Signature] BRIDGE ENGR.  
 APPROVED BY: [Signature] STATE HIGHWAY ENGR.  
 No. A-76 INDEX 5-4

DESIGNED BY: [Signature] DATE: 7-6-29  
 CHECKED BY: [Signature] DATE: 8-18-29  
 TRACED BY: [Signature] DATE: 8-18-29  
 REVISIONS: [Signature] DATE: 8-18-29